

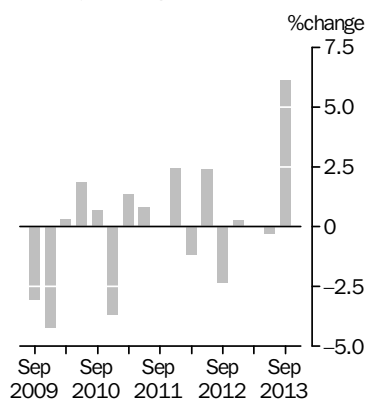
INTERNATIONAL TRADE PRICE INDEXES

AUSTRALIA

EMBARGO: 11.30AM (CANBERRA TIME) THURS 31 OCT 2013

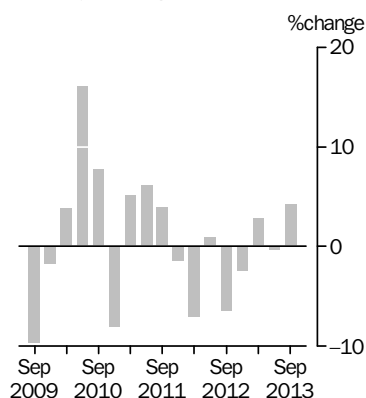
IMPORT PRICE INDEX: all groups

Quarterly % change



EXPORT PRICE INDEX: all groups

Quarterly % change



KEY FIGURES

	Jun Qtr 13 to Sep Qtr 13 % change	Sep Qtr 12 to Sep Qtr 13 % change
Import Price Index all groups	6.1	6.1
Food and live animals	8.7	11.5
Beverages and tobacco	3.0	5.9
Crude materials, inedible, except fuels	7.6	7.0
Mineral fuels, lubricants and related materials	8.0	9.1
Animal and vegetable oils, fats and waxes	6.1	12.0
Chemicals and related products, n.e.s.	2.3	1.4
Manufactured goods classified chiefly by material	6.4	6.3
Machinery and transport equipment	5.4	5.0
Miscellaneous manufactured articles	8.6	11.4
Commodities and transactions, n.e.s.	2.0	-8.2
Export Price Index all groups	4.2	4.2
Food and live animals	5.8	8.0
Beverages and tobacco	1.8	3.3
Crude materials, inedible, except fuels	4.9	13.2
Mineral fuels, lubricants and related materials	3.9	-6.8
Animal and vegetable oils, fats and waxes	1.5	8.2
Chemicals and related products, n.e.s.	1.7	1.8
Manufactured goods classified chiefly by material	3.6	6.8
Machinery and transport equipment	2.4	6.9
Miscellaneous manufactured articles	6.1	6.7
Commodities and transactions, n.e.s.	2.2	-7.4

KEY POINTS

IMPORT PRICE INDEX

- The Import Price Index rose 6.1% in the September quarter 2013. Through the year to the September quarter 2013, the Import Price Index rose 6.1%.

EXPORT PRICE INDEX

- The Export Price Index rose 4.2% in the September quarter 2013. Through the year to the September quarter 2013, the Export Price Index rose 4.2%.

INQUIRIES

For further information about these and related statistics, contact the National Information and Referral Service on 1300 135 070.

NOTES

FORTHCOMING ISSUES

<i>ISSUE (Quarter)</i>	<i>RELEASE DATE</i>
December 2013	30 January 2014
March 2014	1 May 2014
June 2014	31 July 2014
September 2014	30 October 2014

.....

ADDITIONAL INFORMATION

In the *Information Paper: Outcome of the Review of the Producer and International Trade Price Indexes, 2012* (cat. no. 6427.0.55.004) the ABS undertook to release an updated *Producer and International Trade Price Indexes: Concepts, Sources and Methods* (cat. no. 6429.0) publication. This will be released December 11, 2013.

ROUNDING

Any discrepancies between totals and sums of components are due to rounding.

DATA REFERENCES

Data referenced in the Key Points and Commentary are available from the tables shown in this publication, or in the corresponding tables of this publication on the ABS website <<http://www.abs.gov.au>>.

CHANGES IN THIS ISSUE

Both the Import Price Index and the Export Price Index data have been reweighted for the September quarter 2013. Both indexes are reweighted annually. See paragraphs 8–10 of the Explanatory Notes for further details. The new weighting patterns are provided in Appendix 1 of this issue. As a consequence of the annual reweighting, the points contribution data for the June quarter 2013 shown in Tables 2, 8 and 17 differ from that published in the previous issue of this publication.

.....

ABBREVIATIONS

ABS	Australian Bureau of Statistics
ADP	automatic data processing
AHECC	Australian Harmonised Export Commodity Classification
ANZSIC	Australian and New Zealand Standard Industrial Classification
BEC	Classification by Broad Economic Categories
f.o.b.	free on board
HTISC	Harmonized Tariff Item Statistical Classification
IPD	implicit price deflator
n.e.c.	not elsewhere classified
n.e.s.	not elsewhere specified
SITC	Standard International Trade Classification

Brian Pink
Australian Statistician

COMMENTARY

IMPORT PRICE INDEX

The Import Price Index rose 6.1% in the September quarter 2013. This increase was driven primarily by the depreciation of the Australian dollar resulting in increased prices for imports denominated in major trading currencies. Also contributing to this increase were rises in the prices paid for petroleum, petroleum products and related materials (+8.5%), general industrial machinery and equipment, n.e.s., and machine parts, n.e.s. (+9.0%) and electrical machinery, etc. and parts thereof (+6.9%). These increases were partly offset by falls in the prices paid for medicinal and pharmaceutical products (-1.2%) and miscellaneous edible products and preparations (-1.1%).

Through the year to the September quarter 2013, the Import Price Index rose 6.1%. This increase was driven mainly by rises in the prices paid for petroleum, petroleum products and related materials (+9.7%), general industrial machinery and equipment, n.e.s., and machine parts, n.e.s. (+12.3%) and miscellaneous manufactured articles, n.e.s. (+11.6%). Partly offsetting these through the year rises were falls in the prices paid for gold, non-monetary (excluding gold ores and concentrates) (-8.2%), inorganic chemicals (-19.5%) and medicinal and pharmaceutical products (-2.5%).

Major Import Products

Australia's major import products based on contribution are:

- Petroleum, petroleum products and related materials (SITC 33) (+8.5%)
- General industrial machinery and equipment, n.e.s., and machine parts, n.e.s. (SITC 74) (+9.0%)
- Telecommunications and sound recording and reproducing apparatus and equipment (SITC 76) (+5.2%)
- Electrical machinery, etc. and parts thereof (SITC 77) (+6.9%)
- Road vehicles (including air-cushion vehicles) (SITC 78) (+1.6%)

COMMENTARY *continued*

EXPORT PRICE INDEX

The Export Price Index rose 4.2% in the September quarter 2013. This increase was driven primarily by the depreciation of the Australian dollar resulting in increased prices for exports denominated in major trading currencies. Also contributing to this increase were rises in the prices received for metalliferous ores and metal scrap (+4.7%), petroleum, petroleum products and related materials (+9.9%), coal, coke and briquettes (+2.4%), cereals and cereal preparations (+5.9%), gas, natural and manufactured (+3.4%), dairy products and birds' eggs (+18.8%), non-ferrous metals (+3.6%), oil seeds and oleaginous fruits (+16.4%), gold, non-monetary (excluding gold, ores and concentrates) (+2.4%), and meat and meat preparations (+4.1%).

Through the year to the September quarter 2013, the Export Price Index rose 4.2%. This increase was driven mainly by rises in the prices received for metalliferous ores and metal scrap (+13.2%), cereals and cereal preparations (+14.4%), gas, natural and manufactured (+6.7%), dairy products and birds' eggs (+23.5%), textile fibres and their wastes (+9.1%), power generating machinery and equipment (+7.4%), and oil seeds and oleaginous fruits (+15.4%). Partly offsetting these through the year rises were falls in the prices received for coal, coke and briquettes (-15.4%), and gold, non-monetary (excluding gold, ores and concentrates) (-8.2%).

Major Export Products

Australia's major export products based on contribution are:

- Metalliferous ores and metal scrap (SITC 28) (+4.7%)
- Coal, coke and briquettes (SITC 32) (+2.4%)
- Petroleum, petroleum products and related materials (SITC 33) (+9.9%)
- Gas, natural and manufactured (SITC 34) (+3.4%)
- Gold, non-monetary (excluding gold, ores and concentrates) (SITC 97) (+2.4%)

LIST OF TABLES

page

INTERNATIONAL TRADE PRICE INDEXES

1	Import price index: All groups, index numbers and percentage changes	6
2	Import price index: SITC contribution to all groups index	7
3	Import price index: Selected SITC sections	9
4	Import price index: Consumption goods, balance of payments broad economic categories	10
5	Import price index: Capital goods, balance of payments broad economic categories	11
6	Import price index: Intermediate and other merchandise goods, balance of payments broad economic categories	12
7	Export price index: All groups, index numbers and percentage changes	14
8	Export price index: SITC contribution to all groups index	15
9	Export price index: Selected SITC sections	17
10	Export price index: Rural goods, balance of payments classification of exports	18
11	Export price index: Non-rural goods, balance of payments classification of exports	19

ADDITIONAL TABLES AVAILABLE ON ABS WEBSITE

12	Import price index, by selected SITC division	
13	Import price index, by selected HTISC section	
14	Import price index, by selected ANZSIC industry of origin division	
15	Import price index, by selected ANZSIC industry of origin subdivision	
16	Import price index, by BEC category	
17	Export price index, AHECC and ANZSIC contribution to all groups index	
18	Export price index, by selected AHECC section	
19	Export price index, by selected ANZSIC industry of origin division and subdivision	
20	Conversion Factors, from index reference period 1989–90 to 2011–12	

APPENDIX

1	Index structures and weighting patterns	24
----------	---	----

IMPORT PRICE INDEX(a): All groups, index numbers and percentage changes

<i>Period</i>	<i>Index numbers</i>	<i>% change from previous period</i>	<i>% change from corresponding quarter of previous year</i>
2009–10	98.7	-9.2	..
2010–11	97.9	-0.8	..
2011–12	100.0	2.1	..
2012–13	99.6	-0.4	..
2008			
December	114.8	10.7	21.1
2009			
March	111.7	-2.7	14.7
June	104.5	-6.4	5.8
September	101.3	-3.1	-2.3
December	97.0	-4.2	-15.5
2010			
March	97.3	0.3	-12.9
June	99.1	1.8	-5.2
September	99.8	0.7	-1.5
December	96.1	-3.7	-0.9
2011			
March	97.4	1.4	0.1
June	98.2	0.8	-0.9
September	98.2	0.0	-1.6
December	100.6	2.4	4.7
2012			
March	99.4	-1.2	2.1
June	101.8	2.4	3.7
September	99.4	-2.4	1.2
December	99.7	0.3	-0.9
2013			
March	99.7	0.0	0.3
June	99.4	-0.3	-2.4
September	105.5	6.1	6.1

.. not applicable

(a) Index reference period: 2011–12 = 100.0.

IMPORT PRICE INDEX(a), SITC contribution to all groups index

Category	POINTS CONTRIBUTION TO ALL GROUPS		CHANGE TO POINTS CONTRIBUTION
	Jun Qtr 2013(b)	Sep Qtr 2013	Jun Qtr 2013 to Sep Qtr 2013
ALL GROUPS			
All groups	99.4	105.5	6.1
SITC SECTIONS			
0 Food and live animals	4.28	4.66	0.38
1 Beverages and tobacco	0.93	0.95	0.02
2 Crude materials, inedible, except fuels	1.06	1.14	0.08
3 Mineral fuels, lubricants and related materials	17.48	18.90	1.42
4 Animal and vegetable oils, fats and waxes	0.22	0.24	0.02
5 Chemicals and related products, n.e.s.	10.39	10.64	0.25
6 Manufactured goods classified chiefly by material	11.29	12.00	0.71
7 Machinery and transport equipment	39.60	41.72	2.12
8 Miscellaneous manufactured articles	12.12	13.17	1.05
9 Commodities and transactions not classified elsewhere in the SITC	2.01	2.05	0.04

(a) Index reference period: 2011–12 = 100.0.

(b) Differs from previously published June quarter 2013 due to the annual reweighting.

Category	POINTS CONTRIBUTION TO ALL GROUPS		CHANGE TO POINTS CONTRIBUTION
	Jun Qtr 2013(b)	Sep Qtr 2013	Jun Qtr 2013 to Sep Qtr 2013
SITC DIVISIONS			
02 Dairy products and birds' eggs	0.29	0.34	0.05
03 Fish, crustaceans, molluscs and aquatic invertebrates and preparations thereof	0.65	0.75	0.10
05 Vegetables and fruits	0.80	0.89	0.09
07 Coffee, tea, cocoa spices and manufactures thereof	0.57	0.60	0.03
09 Miscellaneous edible products and preparations	0.83	0.82	-0.01
11 Beverages	0.77	0.78	0.01
12 Tobacco	0.15	0.17	0.02
23 Crude rubber	0.04	0.04	0.00
24 Cork and wood	0.26	0.29	0.03
25 Pulp and Waste Paper	0.07	0.08	0.01
26 Textile fibres and their wastes	0.04	0.05	0.01
27 Crude fertilizers, other than those of division 56, and crude minerals (excluding coal, petroleum)	0.14	0.16	0.02
33 Petroleum, petroleum products and related materials	16.21	17.60	1.39
42 Fixed vegetable fats and oils	0.17	0.18	0.01
51 Organic chemicals	1.12	1.16	0.04
52 Inorganic chemicals	0.57	0.61	0.04
53 Dyeing, tanning and colouring materials	0.27	0.30	0.03
54 Medicinal and pharmaceutical products	4.57	4.51	-0.06
55 Essential oils etc	0.88	0.90	0.02
56 Fertilizers (excluding crude)	0.65	0.67	0.02
57 Plastics in primary forms	0.71	0.75	0.04
58 Plastics in non-primary forms	0.64	0.66	0.02
59 Chemical materials and products, n.e.s.	0.99	1.07	0.08
61 Leather, leather manufactures, n.e.s., and addressed furskins	0.05	0.05	0.00
62 Rubber manufactures n.e.s.	1.65	1.69	0.04
63 Cork and wood manufactures	0.36	0.39	0.03
64 Paper, paperboard and articles of paper pulp, of paper or of paperboard	1.12	1.18	0.06
65 Textile yarn, fabrics, made-up articles, n.e.s., and related products	1.07	1.18	0.11
66 Non-metallic mineral manufactures	1.04	1.17	0.13
67 Iron and steel	1.79	1.92	0.13
68 Non-ferrous metals	1.11	1.17	0.06
69 Manufactures of metals, n.e.s.	3.08	3.27	0.19
71 Power generating machinery and equipment	1.97	2.12	0.15
72 Machinery specialised for particular industries	3.82	4.12	0.30
74 General industrial machinery and equipment, n.e.s., and machine parts, n.e.s.	5.60	6.11	0.51
75 Office machines and ADP machines	3.83	4.14	0.31
76 Telecommunications and sound recording equipment and reproducing apparatus and equipment	4.97	5.23	0.26
77 Electrical machinery, etc. and parts thereof	4.79	5.12	0.33
78 Road vehicles (incl. air-cushion vehicles)	13.01	13.21	0.20
79 Other transport equipment	1.35	1.40	0.05
81 Prefabricated buildings and fixtures n.e.s.	0.58	0.63	0.05
82 Furniture and parts thereof	1.30	1.45	0.15
83 Travel goods and handbags	0.42	0.47	0.05
84 Articles of apparel and clothing	2.65	2.87	0.22
85 Footwear	0.66	0.73	0.07
87 Professional, scientific and controlling instruments and apparatus, n.e.s.	2.22	2.39	0.17
88 Photographic and optical goods	0.61	0.67	0.06
89 Miscellaneous manufactured articles, n.e.s.	3.68	3.97	0.29
97 Gold, non-monetary (excluding gold ores and concentrates)	2.01	2.05	0.04

(a) Index reference period: 2011-12 = 100.0.

(b) Differs from previously published June quarter 2013 due to the annual reweighting.

IMPORT PRICE INDEX(a): SITC sections

<i>Period</i>	<i>Food and live animals (0)</i>	<i>Beverages and tobacco (1)</i>	<i>Crude materials, inedible, except fuels (2)</i>	<i>Mineral fuels, lubricants and related materials (3)</i>	<i>Animal and vegetable oils, fats and waxes (4)</i>	<i>Chemicals and related products, n.e.s. (5)</i>	<i>Manufactured goods classified chiefly by material (6)</i>	<i>Machinery and transport equipment (7)</i>	<i>Miscellaneous manufactured articles (8)</i>	<i>Commodities and transactions, n.e.s. (9)</i>
2009–10	99.1	107.1	94.9	75.1	94.7	100.9	99.7	109.8	106.4	75.1
2010–11	96.8	103.6	102.5	84.9	97.8	99.8	99.8	103.3	100.1	84.9
2011–12	100.0	100.0	100.0	100.0	100.0	100.0	100.0	100.0	100.0	100.0
2012–13	99.9	97.4	96.9	97.6	95.3	98.9	99.3	99.8	102.1	96.7
2008										
December	117.0	103.5	162.5	90.2	137.9	127.4	117.0	124.3	128.2	71.3
2009										
March	111.9	110.1	127.9	60.9	140.4	116.1	119.3	129.1	134.8	82.5
June	108.4	108.4	92.1	64.6	120.3	108.4	108.0	121.6	120.5	73.2
September	101.5	108.3	90.1	74.4	103.6	104.2	103.3	114.5	112.2	69.6
December	95.2	107.8	90.2	74.0	97.9	100.3	97.0	108.2	104.1	73.3
2010										
March	98.7	107.1	94.6	73.6	92.3	98.2	98.2	108.8	103.9	74.8
June	101.0	105.3	104.7	78.4	85.0	100.7	100.1	107.6	105.4	82.7
September	99.8	105.4	101.5	77.8	89.2	102.2	103.4	108.1	106.4	83.1
December	94.3	103.2	101.3	77.0	95.2	98.5	98.8	103.6	99.2	84.8
2011										
March	96.1	103.5	104.0	87.4	99.0	98.5	98.8	102.0	98.8	84.5
June	96.9	102.4	103.2	97.2	107.9	99.8	98.0	99.5	96.1	87.2
September	97.9	100.5	102.2	94.5	104.9	99.8	99.2	99.1	97.4	99.7
December	100.7	99.4	102.4	99.8	105.1	100.4	100.6	100.8	100.9	102.9
2012										
March	99.7	99.3	94.9	100.8	94.7	98.5	99.4	99.2	99.3	98.9
June	101.7	100.8	100.5	104.8	95.4	101.4	100.9	100.9	102.4	98.5
September	99.8	96.2	96.8	95.3	91.0	99.7	99.6	100.1	101.5	98.2
December	98.9	96.3	97.0	97.3	95.9	99.7	99.4	100.0	101.2	102.6
2013										
March	98.6	98.1	97.6	101.3	98.2	97.3	98.7	99.4	101.5	97.6
June	102.4	98.9	96.3	96.3	96.0	98.8	99.5	99.7	104.1	88.3
September	111.3	101.9	103.6	104.0	101.9	101.1	105.9	105.1	113.1	90.1

(a) Index reference period: 2011–12 = 100.0.

IMPORT PRICE INDEX(a): Consumption goods

BALANCE OF PAYMENTS BROAD ECONOMIC CATEGORIES

	Consumption goods total	<i>Food and beverages, mainly for consumption</i>	<i>Household electrical items</i>	<i>Non-industrial transport equipment</i>	<i>Textiles, clothing and footwear</i>	<i>Toys, books and leisure goods</i>	<i>Consumption goods, n.e.s.</i>
2009–10	105.7	101.0	124.7	105.9	95.6	110.4	107.0
2010–11	101.7	97.7	107.9	102.3	94.4	104.1	104.6
2011–12	100.0	100.0	100.0	100.0	100.0	100.0	100.0
2012–13	99.5	100.3	97.7	100.3	100.8	102.0	97.7
2008							
December	117.7	116.0	145.8	106.1	116.1	135.3	118.4
2009							
March	120.8	113.2	149.1	110.2	123.3	140.2	120.9
June	114.0	109.1	140.4	109.2	110.4	125.1	113.1
September	108.7	103.4	132.0	107.7	101.4	115.0	108.4
December	103.6	98.0	122.8	105.6	92.6	106.7	104.7
2010							
March	104.9	100.5	122.9	106.1	92.5	109.9	106.6
June	105.6	102.2	120.9	104.2	95.8	109.9	108.2
September	105.4	100.6	116.4	103.1	99.2	111.1	108.7
December	101.2	95.8	107.4	102.6	92.9	103.9	104.3
2011							
March	100.6	97.1	106.1	101.6	94.0	102.0	103.0
June	99.6	97.2	101.8	101.7	91.4	99.3	102.3
September	99.5	98.1	101.9	100.9	96.8	99.0	100.0
December	101.2	100.4	101.6	100.2	101.8	99.7	102.4
2012							
March	98.4	99.6	97.3	98.7	99.7	99.1	97.1
June	100.8	101.8	99.3	100.2	101.8	102.1	100.5
September	99.5	99.5	98.1	100.2	100.4	101.9	98.1
December	99.2	99.2	96.5	100.9	100.7	101.1	97.2
2013							
March	99.1	99.5	97.5	100.5	99.8	100.9	97.4
June	100.2	103.0	98.6	99.5	102.3	104.1	98.0
September	105.1	110.7	104.2	101.0	111.3	109.4	102.7

(a) Index reference period: 2011–12 = 100.0.

BALANCE OF PAYMENTS BROAD ECONOMIC CATEGORIES

<i>Period</i>	Capital goods total	<i>Machinery and industrial equipment</i>	<i>ADP equipment</i>	<i>Telecommunications equipment</i>	<i>Civil aircraft</i>	<i>Industrial transport equipment, n.e.s.</i>	<i>Capital goods, n.e.s.</i>
2009–10	111.0	106.2	126.6	115.6	110.4	102.3	113.7
2010–11	103.7	101.3	110.6	106.3	102.0	101.2	103.8
2011–12	100.0	100.0	100.0	100.0	100.0	100.0	100.0
2012–13	99.7	97.9	100.3	97.3	102.8	102.1	102.9
2008							
December	130.0	121.1	165.4	146.3	136.7	107.0	129.4
2009							
March	135.3	127.6	167.6	145.4	146.8	113.1	136.0
June	125.4	119.5	150.4	132.5	133.5	108.2	125.5
September	116.8	110.1	136.4	122.3	117.2	107.1	121.9
December	109.1	104.6	123.8	114.2	106.2	100.7	112.7
2010							
March	109.5	105.8	123.3	113.6	108.3	103.0	108.7
June	108.4	104.3	122.9	112.4	109.8	98.4	111.5
September	109.5	106.3	122.0	113.3	110.7	101.7	109.7
December	104.2	101.6	111.1	107.0	101.9	102.5	104.1
2011							
March	102.2	99.9	107.9	104.3	99.9	100.9	102.6
June	98.8	97.4	101.4	100.5	95.5	99.5	98.8
September	98.5	98.3	99.9	98.2	95.9	98.9	99.1
December	101.1	101.3	101.8	102.7	100.9	98.4	101.0
2012							
March	99.3	99.4	97.7	98.6	99.4	102.0	98.6
June	101.1	101.1	100.6	100.5	103.8	100.8	101.4
September	100.4	98.4	101.2	99.7	102.4	102.4	103.3
December	99.9	98.8	100.4	97.6	102.8	101.4	101.7
2013							
March	99.0	97.3	98.8	95.3	102.8	103.0	102.5
June	99.3	96.9	100.7	96.5	103.2	101.7	104.1
September	105.3	104.9	108.3	102.1	103.1	102.0	112.1

(a) Index reference period: 2011–12 = 100.0.

IMPORT PRICE INDEX(a): Intermediate and other merchandise goods

BALANCE OF PAYMENTS BROAD ECONOMIC CATEGORIES

<i>Period</i>	Intermediate and other merchandise goods total	<i>Intermediate and other goods total excluding non- monetary gold</i>	<i>Food and beverages, mainly for industry</i>	<i>Primary industrial supplies, n.e.s.</i>	<i>Fuels and lubricants</i>	<i>Parts for transport equipment</i>	<i>Parts for ADP equipment</i>	<i>Other parts for capital goods</i>	<i>Organic and inorganic chemicals</i>
2009–10	90.1	91.5	92.1	98.8	75.3	101.2	127.1	108.3	96.9
2010–11	93.4	93.8	99.7	103.3	84.6	99.9	111.2	101.7	89.7
2011–12	100.0	100.0	100.0	100.0	100.0	100.0	100.0	100.0	100.0
2012–13	99.4	99.5	91.2	98.9	97.9	100.3	102.0	101.3	102.4
2008									
December	107.5	111.8	119.1	185.0	89.0	111.6	174.9	121.7	129.0
2009									
March	97.8	99.3	109.2	138.9	60.2	116.4	179.1	126.4	126.2
June	91.5	93.5	103.6	98.7	64.4	109.1	156.7	118.8	111.7
September	91.4	93.9	94.2	97.4	74.4	103.4	138.0	113.4	109.1
December	88.6	90.1	90.6	94.5	74.3	98.5	123.5	107.1	103.2
2010									
March	88.4	89.6	92.4	97.1	73.8	100.1	123.2	106.3	88.4
June	91.9	92.5	91.3	106.1	78.5	102.6	123.6	106.2	86.7
September	92.9	93.4	96.6	99.9	77.4	103.1	123.8	106.8	92.0
December	90.0	90.1	95.9	101.6	76.9	99.7	111.6	101.6	87.6
2011									
March	93.7	94.2	99.3	105.7	87.2	99.3	108.2	100.9	87.7
June	97.1	97.6	106.8	106.0	96.8	97.6	101.0	97.6	91.3
September	97.3	97.1	104.0	102.2	94.4	97.8	99.3	98.4	97.7
December	100.1	99.9	103.1	101.3	99.7	100.3	101.6	100.8	94.9
2012									
March	100.0	100.1	96.8	94.7	100.9	100.2	97.8	99.5	100.0
June	102.6	102.9	96.1	101.8	104.9	101.7	101.3	101.3	107.3
September	98.6	98.6	93.5	98.0	95.6	100.0	101.9	100.5	103.6
December	99.8	99.5	91.9	99.0	97.5	100.3	101.8	100.8	108.0
2013									
March	100.2	100.3	89.8	100.5	101.8	99.9	100.9	101.0	98.2
June	98.8	99.5	89.6	97.9	96.7	100.8	103.5	102.9	99.9
September	105.7	106.6	96.6	106.2	104.5	106.6	111.6	110.4	104.5

(a) Index reference period: 2011–12 = 100.0.

BALANCE OF PAYMENTS BROAD ECONOMIC CATEGORIES *continued*

<i>Period</i>	<i>Paper and paperboard</i>	<i>Textile yarn and fabric</i>	<i>Iron and steel</i>	<i>Plastics</i>	<i>Processed industrial supplies, n.e.s.</i>	<i>Non- monetary gold</i>
2009-10	109.1	87.0	96.5	111.7	98.5	75.1
2010-11	102.2	90.6	101.7	106.0	98.8	84.9
2011-12	100.0	100.0	100.0	100.0	100.0	100.0
2012-13	100.1	98.5	94.7	104.5	100.1	96.7
2008						
December	120.3	110.0	132.1	138.2	129.0	71.3
2009						
March	126.8	109.7	131.5	132.6	118.0	82.5
June	122.7	99.1	101.5	120.7	108.7	73.3
September	114.3	88.9	101.8	112.7	102.0	69.6
December	108.8	83.5	92.1	108.6	96.2	73.3
2010						
March	108.0	85.7	95.2	109.0	96.7	74.8
June	105.1	89.8	97.0	116.4	99.0	82.7
September	105.9	94.5	106.5	115.7	101.9	83.1
December	104.3	87.8	98.2	101.8	97.2	84.8
2011						
March	100.5	88.7	99.8	102.2	98.1	84.5
June	98.1	91.5	102.3	104.4	98.0	87.2
September	100.2	96.2	101.4	100.3	98.5	99.7
December	101.6	101.7	102.2	101.2	99.7	102.9
2012						
March	97.9	101.4	99.2	97.1	100.3	98.9
June	100.4	100.7	97.3	101.5	101.6	98.5
September	98.6	98.5	96.2	102.0	100.3	98.2
December	100.2	98.5	94.9	103.0	100.3	102.6
2013						
March	99.9	97.7	93.1	105.3	98.8	97.6
June	101.7	99.2	94.6	107.7	100.8	88.3
September	107.8	108.5	101.3	112.6	107.5	90.1

(a) Index reference period: 2011-12 = 100.0.

EXPORT PRICE INDEX (a): All groups, index numbers and percentage changes

<i>Period</i>	<i>Index numbers</i>	<i>% change from previous period</i>	<i>% change from corresponding quarter of previous year</i>
2009–10	80.4	-19.8	..
2010–11	95.9	19.3	..
2011–12	100.0	4.3	..
2012–13	90.0	-10.0	..
2008			
December	112.2	15.9	54.8
2009			
March	107.0	-4.6	42.7
June	85.0	-20.6	-0.1
September	76.8	-9.6	-20.7
December	75.5	-1.7	-32.7
2010			
March	78.4	3.8	-26.7
June	91.0	16.1	7.1
September	98.1	7.8	27.7
December	90.2	-8.1	19.5
2011			
March	94.8	5.1	20.9
June	100.6	6.1	10.5
September	104.5	3.9	6.5
December	103.0	-1.4	14.2
2012			
March	95.8	-7.0	1.1
June	96.7	0.9	-3.9
September	90.5	-6.4	-13.4
December	88.3	-2.4	-14.3
2013			
March	90.8	2.8	-5.2
June	90.5	-0.3	-6.4
September	94.3	4.2	4.2

.. not applicable

(a) Index reference period: 2011–12 = 100.0.

EXPORT PRICE INDEX(a): SITC contribution to all groups index

Category	CONTRIBUTION TO ALL GROUPS INDEX		CHANGE IN POINTS CONTRIBUTION
	Jun Qtr 2013(b)	Sep Qtr 2013	Jun Qtr 2013 to Sep Qtr 2013
ALL GROUPS			
All groups	90.5	94.3	3.8
SITC SECTIONS			
0 Food and live animals	9.64	10.20	0.56
1 Beverages and tobacco	0.79	0.80	0.01
2 Crude materials, inedible, except fuels	33.73	35.38	1.65
3 Mineral fuels, lubricants and related materials	24.29	25.24	0.95
4 Animal and vegetable oils, fats and waxes	0.21	0.22	0.01
5 Chemicals and related products, n.e.s.	3.13	3.18	0.05
6 Manufactured goods classified chiefly by material	5.86	6.06	0.20
7 Machinery and transport equipment	4.98	5.10	0.12
8 Miscellaneous manufactured articles	1.85	1.96	0.11
9 Commodities and transactions not classified elsewhere in the SITC	5.98	6.12	0.14

(a) Index reference period: 2011–12 = 100.0.

(b) Differs from previously published June quarter 2013 due to the annual reweighting.

Category	CONTRIBUTION TO ALL GROUPS INDEX		CHANGE IN POINTS CONTRIBUTION	
	Jun Qtr 2013(b)	Sep Qtr 2013	Jun Qtr 2013 to Sep Qtr 2013	
..... SELECTED SITC DIVISIONS				
00	Live animals other than animals of division 03	0.36	0.38	0.02
01	Meat and meat preparations	2.66	2.77	0.11
02	Dairy products and birds' eggs	0.78	0.92	0.14
03	Fish, crustaceans, molluscs and aquatic invertebrates and preparations thereof	0.36	0.37	0.01
04	Cereals and cereal preparations	3.28	3.47	0.19
05	Vegetables and fruit	0.73	0.79	0.06
06	Sugars, sugar preparations and honey	0.59	0.59	0.00
07	Coffee, tea, cocoa, spices and manufactures thereof	0.09	0.09	0.00
08	Feeding stuff for animals (not including unmilled cereals)	0.44	0.44	0.00
09	Miscellaneous edible products and preparations	0.36	0.37	0.01
11	Beverages	0.76	0.77	0.01
21	Hides, skins and furskins, raw	0.30	0.30	0.00
22	Oil seeds and oleaginous fruits	0.72	0.84	0.12
24	Cork and wood	0.34	0.36	0.02
26	Textile fibres and their wastes	1.95	2.01	0.06
27	Crude fertilisers, other than those of division 56, and crude minerals (excluding coal, petroleum)	0.40	0.43	0.03
28	Metalliferous ores and metal scrap	29.82	31.23	1.41
32	Coal, coke and briquettes	14.45	14.78	0.33
33	Petroleum, petroleum products and related materials	4.37	4.80	0.43
34	Gas, natural and manufactured	5.47	5.66	0.19
41	Animal oils and fats	0.14	0.14	0.00
51	Organic chemicals	0.08	0.09	0.01
52	Inorganic chemicals	0.29	0.30	0.01
53	Dyeing, tanning and colouring materials	0.24	0.26	0.02
54	Medicinal and pharmaceutical products	1.54	1.54	0.00
57	Plastics in primary forms	0.14	0.15	0.01
58	Plastics in non-primary forms	0.12	0.12	0.00
59	Chemical materials and products, n.e.s.	0.36	0.38	0.02
61	Leather, leather manufactures, n.e.s., and dressed furskins	0.07	0.08	0.01
62	Rubber manufactures, n.e.s.	0.08	0.07	-0.01
64	Paper, paperboard, and articles of paper pulp, of paper or of paperboard	0.30	0.32	0.02
66	Non-metallic mineral manufactures, n.e.s.	0.33	0.34	0.01
67	Iron and steel	0.51	0.52	0.01
68	Non-ferrous metals	4.09	4.24	0.15
71-75	Power generating, general industrial and other specialised machinery and equipment	2.29	2.36	0.07
76-77	Telecommunications equipment, sound-recording apparatus and electrical machinery, n.e.s.	0.99	0.97	-0.02
78	Road vehicles (incl. air-cushion vehicles)	1.05	1.10	0.05
79	Other transport equipment	0.66	0.67	0.01
81-82	Prefabricated buildings and furniture and parts thereof	0.08	0.08	0.00
87	Professional, scientific and controlling instruments and apparatus, n.e.s.	0.69	0.77	0.08
88	Photographic apparatus, equipment and supplies and optical goods, n.e.s.	0.09	0.10	0.01
89	Miscellaneous manufactured articles, n.e.s.	0.86	0.89	0.03
97	Gold, non-monetary (excluding gold, ores and concentrates)	5.33	5.45	0.12

(a) Index reference period: 2011-12 = 100.0.

(b) Differs from previously published June quarter 2013 due to the annual reweighting.

EXPORT PRICE INDEX(a): SITC sections

<i>Period</i>	<i>Food and live animals (0)</i>	<i>Beverages and tobacco (1)</i>	<i>Crude materials, inedible, except fuels (2)</i>	<i>Mineral fuels, lubricants and related materials (3)</i>	<i>Animal and vegetable oils, fats and waxes (4)</i>	<i>Chemicals and related products, n.e.s. (5)</i>	<i>Manufactured goods classified chiefly by material (6)</i>	<i>Machinery and transport equipment (7)</i>	<i>Miscellaneous manufactured articles (8)</i>	<i>Commodities and transactions, n.e.s. (9)</i>
2009-10	89.3	110.7	73.0	71.7	85.8	89.7	97.7	106.6	113.1	75.8
2010-11	98.2	104.1	101.5	87.4	107.5	94.9	105.9	100.9	103.8	85.9
2011-12	100.0	100.0	100.0	100.0	100.0	100.0	100.0	100.0	100.0	100.0
2012-13	98.5	106.0	86.4	84.5	93.4	102.6	95.0	101.9	96.6	95.5
2008										
December	112.8	127.6	103.4	133.7	56.9	100.3	119.5	124.0	132.8	74.4
2009										
March	101.3	129.9	93.3	134.3	71.6	98.3	92.2	124.8	131.6	84.5
June	91.3	123.3	73.1	88.1	102.9	93.1	86.4	115.7	121.9	74.3
September	89.5	112.7	65.5	68.9	86.7	89.4	93.9	109.3	118.8	70.3
December	84.8	110.0	64.5	67.6	88.8	88.1	92.6	104.9	112.3	74.2
2010										
March	90.2	110.0	68.3	69.3	78.4	89.8	99.3	105.4	108.7	75.1
June	92.6	110.1	93.5	80.8	89.1	91.6	105.0	106.6	112.4	83.5
September	93.6	107.6	105.8	91.6	94.8	94.3	104.1	105.6	107.8	84.4
December	95.7	105.3	92.3	79.4	110.5	93.2	103.8	100.2	103.4	85.3
2011										
March	100.4	105.8	99.6	84.5	118.3	96.0	108.3	100.3	103.1	85.4
June	103.1	97.7	108.1	94.0	106.3	96.2	107.2	97.3	100.8	88.5
September	102.1	100.5	108.8	103.4	104.6	97.5	106.6	98.7	101.0	100.7
December	102.6	100.6	103.8	104.5	103.9	98.9	98.7	99.5	101.5	103.3
2012										
March	98.0	98.1	92.6	95.6	94.0	101.2	98.3	99.6	98.5	98.9
June	97.3	100.7	94.9	96.6	97.5	102.4	96.4	102.2	99.0	97.2
September	97.0	105.4	83.8	91.0	92.7	102.6	92.2	100.3	96.3	96.9
December	99.9	105.7	80.9	84.2	84.0	102.3	95.5	100.6	96.6	100.9
2013										
March	98.1	106.0	90.3	81.3	97.9	102.6	97.1	102.1	96.5	96.2
June	99.1	107.0	90.5	81.6	98.8	102.7	95.1	104.7	96.9	87.8
September	104.8	108.9	94.9	84.8	100.3	104.4	98.5	107.2	102.8	89.7

(a) Index reference period: 2011-12 = 100.0.

BALANCE OF PAYMENTS CLASSIFICATION OF EXPORTS

<i>Period</i>	Rural goods total	<i>Meat and meat preparations</i>	<i>Cereal grains and cereal preparations</i>	<i>Wool and sheepskins</i>	<i>Other rural</i>
2009–10	85.0	91.3	90.9	68.8	83.8
2010–11	95.0	101.2	98.6	89.2	92.0
2011–12	100.0	100.0	100.0	100.0	100.0
2012–13	97.1	98.8	101.4	86.3	95.8
2008					
December	105.1	112.8	141.0	66.7	98.6
2009					
March	94.1	96.7	125.9	60.3	90.7
June	86.2	88.5	110.5	59.6	83.2
September	84.8	91.8	98.2	61.5	82.5
December	81.4	85.8	90.0	65.6	80.1
2010					
March	85.4	91.2	87.6	74.9	84.4
June	88.2	96.2	87.6	73.2	88.3
September	90.2	99.9	88.8	73.2	90.3
December	91.7	96.2	96.8	78.1	90.5
2011					
March	97.0	103.7	102.5	96.0	91.7
June	101.2	105.1	106.3	109.3	95.4
September	103.2	96.7	109.4	112.2	101.8
December	101.5	101.0	101.3	99.7	102.1
2012					
March	98.0	102.3	94.5	96.0	98.0
June	97.2	100.1	94.7	92.0	98.1
September	95.1	100.3	95.4	84.4	94.5
December	97.1	98.2	105.1	80.8	95.4
2013					
March	97.4	98.4	101.9	90.0	95.6
June	98.6	98.2	103.0	90.1	97.8
September	104.5	102.2	109.1	89.5	105.8

(a) Index reference period: 2011–12 = 100.0.

BALANCE OF PAYMENTS CLASSIFICATION OF EXPORTS

<i>Period</i>	<i>Non-rural goods total (excl. non-monetary gold)</i>	<i>Metal ores and minerals</i>	<i>Coal, coke and briquettes</i>	<i>Other mineral fuels</i>	<i>Metals (excl. non-monetary gold)</i>	<i>Machinery</i>	<i>Transport equipment</i>	<i>Other manufactures</i>	<i>Other non-rural</i>	<i>Non-monetary gold</i>
2009–10	80.0	73.0	72.3	70.3	99.3	106.9	107.4	97.1	92.4	75.3
2010–11	97.1	103.8	90.0	82.9	108.2	101.2	100.5	99.4	97.4	84.9
2011–12	100.0	100.0	100.0	100.0	100.0	100.0	100.0	100.0	100.0	100.0
2012–13	88.5	85.9	77.2	98.1	94.2	101.6	102.1	96.9	93.6	95.9
2008										
December	118.0	107.7	165.8	97.6	122.0	122.5	128.1	112.1	102.2	71.2
2009										
March	111.9	96.9	174.4	83.8	89.9	122.9	129.7	107.9	104.4	82.5
June	85.8	73.9	110.2	62.6	86.1	114.2	119.7	99.9	94.7	73.3
September	76.0	65.1	72.5	64.2	95.6	109.0	111.5	97.0	88.1	69.6
December	74.4	63.7	67.5	67.1	94.0	105.4	105.4	95.0	88.3	74.0
2010										
March	77.3	67.3	66.4	71.9	100.9	106.2	105.3	96.5	96.7	74.7
June	92.1	95.9	82.6	78.0	106.6	106.8	107.5	99.9	96.6	82.7
September	100.8	109.7	96.9	81.2	105.5	105.8	105.4	100.3	93.5	83.0
December	90.3	94.4	81.5	76.1	106.4	100.8	99.5	97.7	94.4	84.7
2011										
March	95.4	101.4	84.5	85.7	111.3	100.5	100.2	99.9	100.4	84.4
June	101.7	109.7	97.0	88.7	109.5	97.7	97.0	99.8	101.1	87.3
September	105.1	109.1	106.1	98.7	107.5	99.1	98.0	101.9	101.4	100.3
December	103.2	104.2	107.1	100.0	98.3	99.3	100.0	100.8	104.4	103.3
2012										
March	95.1	92.1	94.9	96.7	98.7	99.4	100.1	97.6	95.6	99.2
June	96.6	94.6	92.0	104.6	95.5	102.2	102.0	99.7	98.6	97.2
September	89.3	83.3	86.4	98.9	90.8	100.4	99.8	95.7	95.4	97.5
December	85.9	79.8	77.6	96.1	95.2	100.3	100.9	96.1	94.0	102.0
2013										
March	89.3	90.3	73.2	96.4	96.9	102.0	101.6	97.4	91.5	96.7
June	89.4	90.1	71.4	100.8	93.7	103.6	106.2	98.2	93.4	87.5
September	93.0	94.2	73.1	107.2	97.0	105.9	110.1	102.5	94.1	89.6

(a) Index reference period: 2011–12 = 100.0.

EXPLANATORY NOTES

INTRODUCTION

1 This publication contains indexes measuring changes in the prices paid for imports of merchandise that are landed in Australia each quarter and prices received for exports of merchandise that are shipped from Australia each quarter. The import price indexes are in tables 1–6 and the export price indexes are in tables 7–11.

2 The indexes are calculated on the index reference period 2011–12 = 100.0.

SCOPE

3 The import price index excludes the following items (representing less than 5% of the value of merchandise imported during the weighting period) because of the inherent difficulties in pricing the items to constant quality (see paragraph 15 below):

- live animals (not for food)
- jewellery and other articles of precious metal, n.e.s.
- military equipment
- commodities not classified according to kind
- works of art, collectors' pieces, antiques
- railway vehicles
- ships of various types.

4 The export price index includes re-exports of merchandise (i.e. goods which are imported into Australia and exported at a later date without physical transformation).

CLASSIFICATIONS

5 Index numbers for selected sections of the Standard International Trade Classification (SITC) are provided in table 3 (import price index) and table 9 (export price index). The SITC (Revision 4) used from the September quarter 2008 onwards is the United Nations' updated version, replacing SITC (Revision 3). SITC (Revision 4) retains the overall structure of SITC (Revision 3) and consists of the same number of sections, divisions and groups. Changes to the classification labels and components were made at levels lower than those used in the import and export prices indexes. As a result, there has been no material impact on the indexes, which remain comparable across the changes in classification.

6 The import price index is also presented by Balance of Payments Broad Economic Categories in tables 4–6, which have been disaggregated into balance of payments groupings of consumption goods, capital goods and intermediate and other merchandise goods. From the September quarter 2008 onwards, the previous heading of Classification of Broad Economic Categories (BEC) End Use, has been replaced with Balance of Payments Broad Economic Categories. This is simply a name change, with the series remaining comparable to previously published series.

7 The export price index is also presented by balance of payments classification of exports groupings in tables 10 and 11.

ITEMS AND WEIGHTS

8 The import price index and export price index are annually reweighted chained Lowe indexes. This method of weighting was introduced for the September quarter 2000 and replaced the 'fixed-base' method of weighting in which the weighting patterns were updated infrequently (generally once every 5 or 10 years).

9 The annual reweighting and chaining process involves a number of steps in order to provide new weights each year. The current weighting basis for the import price index was derived from the average value of import items during 2012–13. This differs slightly from the export price index which has used the average value of export items during 2011–12 and 2012–13, due to the greater volatility associated with the value of export items. These weights were revalued to reflect link period (June quarter 2013) price levels. This means, for example, that the weights for the import price index are effectively determined using quantities from 2012–13 and prices from the June quarter 2013. Indexes derived by using the new weights for the September quarter 2013 were then linked to the already published June quarter 2013 (link period) levels which were derived using the previous series weights. Using this methodology, long-term chain

EXPLANATORY NOTES *continued*

ITEMS AND WEIGHTS *continued*

linked series can be constructed over time on a consistent reference base for continuity and user convenience, but using annually refreshed weights. From the September quarter 2012, the index reference period for each index series is 2012–13 = 100.0 even though the weights are being updated each year.

10 The commodities directly represented in each index (the index items) were selected on the basis of the significance of their import and export values in the period 2012–13 for imports and 2011–12 and 2012–13 for exports. All significant commodities were selected for pricing. The weights for minor commodities which are not directly priced are included with those of comparable directly priced items where prices are likely to move in a similar way.

PRICE MEASUREMENT

11 In general, prices of individual shipments are obtained from major importers and exporters of the selected items and relate to the quarter in which the imported goods physically arrive in Australia and the exported goods physically leave Australia.

12 Imports are priced on a 'free on board' (f.o.b.), country of origin basis. Therefore freight and insurance charges involved in shipping goods from foreign to Australian ports are excluded from the prices used in the index, as are Australian import duties and taxes. Similarly, exports are priced on a f.o.b. basis at the main Australian ports of export. Exports are exempt from taxes on products.

13 As the prices used in the indexes are expressed in Australian currency, changes in the relative value of the Australian dollar and overseas currencies can have a direct impact on price movements for the many commodities that are bought and sold in currencies other than Australian dollars. Prices reported in a foreign currency are converted to Australian dollars using relevant exchange rates. Where imports or exports are transacted in prices expressed in terms of a foreign currency and forward exchange cover is used, the prices in the indexes exclude the forward exchange cover. As noted, imports are priced on a country of origin basis. Therefore the exchange rates applied are impacted by the differences between the date of transaction (ownership change) and the shipping time from the country of origin to Australia.

14 The main pricing methodology used is specification pricing, under which a manageable sample of precisely specified products is selected, in consultation with each reporting business, for repeat pricing. In specifying the products, care is taken to ensure that they are fully defined in terms of all the characteristics which influence their transaction prices. As such, all the relevant technical characteristics need to be described (e.g. make, model, features) along with the unit of sale, type of packaging, conditions of sale (e.g. delivered, payment within 30 days), etc. The goods are also specified by country and market in order to lessen the impact of price variations attributable solely to changes over time in the mix of countries, or markets.

15 When the quality or specifications of an item being priced change over time, adjustments are made to the reported prices so that the index captures only pure price change. That is, any element of price change attributable to a change in quality is removed. If there is an increase (decrease) in the quality of an item, then the price index is adjusted downwards (upwards) to reflect the 'worth' of the quality change. This technique is known as pricing to constant quality.

16 Wherever possible, prices from volume selling products being traded with predominant countries, or markets, are obtained to ensure specifications have a good chance of being re-priced over time and index series are representative of overall price movements. Individual product weights and weights between markets and countries are regularly reviewed to keep the indexes up to date. The ABS has access to a rich source of international merchandise trade data and selectively uses average unit values in the export price index to augment specification pricing. Imported commodities are typically

EXPLANATORY NOTES *continued*

PRICE MEASUREMENT *continued*

more stable in price, but non-homogenous in character and generally do not lend themselves to measurement by average unit value.

DIFFERENCES BETWEEN EPI AND EXPORT IPD

17 There are differences between the export price index (EPI) presented in this publication, and the export implicit price deflator (IPD) presented in *National Income, Expenditure and Product* (cat. no. 5206.0) and *Balance of Payments and International Investment Position* (cat. no. 5302.0). The differences are mainly due to the index methodology (fixed basket price index for the EPI, whereas the IPD is a quarterly weighted index, which includes price change and compositional change from period to period), the completeness of the dataset used and the source of the data. Further, the EPI is calculated from predominantly sampled businesses, whereas the export IPD is calculated from predominantly international merchandise trade data supplied by Customs. These differences can result in significant divergences between the measures when prices of commodities, which form a large proportion of exports, are volatile.

INDEX NUMBERS

18 Index numbers for financial years are simple averages of the relevant quarterly index numbers.

ANALYSIS OF INDEX CHANGES

19 Care should be exercised when interpreting quarter-to-quarter movements in the indexes as short-term movements do not necessarily indicate changes in trend.

20 Movements in indexes from one period to another can be expressed either as changes in 'index points' or as percentage changes. The following example illustrates the method of calculating index points changes and percentage changes between any two periods:

Export price index, All groups index number:

September quarter 2013	94.3 (see table 7)
less September quarter 2012	90.5 (see table 7)
Change in index points	3.8
Percentage change	$3.8/90.5 \times 100 = 4.2\%$

21 Tables 2 and 8 provide analyses of the contribution which SITC sections and divisions make to the All groups import price index and export price index, respectively. For example, exports of mineral fuels, lubricants and related materials contributed 25.24 index points to the All groups export price index number of 94.3 for the September quarter 2013 and 0.95 index points to the increase of 3.8 index points between the June 2013 and September 2013 quarters.

EXPLANATORY NOTES *continued*

FURTHER INFORMATION

22 For further information on price indexes in the ABS refer to the following publications:

Information Paper: Producer and International Trade Price Indexes; Concepts, Sources and Methods 2006, (cat. no. 6429.0)

Information Paper: Changes to Time Series Spreadsheets for Producer Price Indexes, Australia, Feb 2006, (cat. no. 6427.0.55.001)

Information Paper: Update on ANZSIC 2006 Implementation for Producer and International Trade Price Indexes, Australia, 2009, (cat. no. 6427.0.55.002)

Information Paper: Review of the Producer and International Trade Price Indexes, 2011 (cat. no. 6427.0.55.003)

Information Paper: Outcome of the Review of the Producer and International Trade Price Indexes, 2012 (cat. no. 6427.0.55.004)

Information Paper: Implementation of the Review of the Producer and International Trade Price Indexes, 2012 (cat. no. 6427.0.55.005)

Information Paper: An Analytical Framework for Price Indexes in Australia, (cat. no. 6421.0)

Information Paper: Producer Price Index Developments, (cat. no. 6422.0)

Information Paper: Review of the Import Price Index and Export Price Index, Australia, (cat. no. 6424.0)

Information Paper: Price Indexes and The New Tax System, (cat. no. 6425.0)

RELATED PUBLICATIONS

23 Users may also wish to refer to the following related publications, which are available from the ABS website:

Producer Price Indexes, Australia, (cat. no. 6427.0)

Consumer Price Index, Australia, (cat. no. 6401.0)

Wage Price Index, Australia, (cat. no. 6345.0)

Australian National Accounts, Input–Output Tables, (cat. no. 5209.0)

Balance of Payments and International Investment Position, Australia, (cat. no. 5302.0)

24 Current publications and other products released by the ABS are listed on the ABS website <<http://www.abs.gov.au>>. The ABS also issues a daily *Release Advice* on the website which details products to be released in the week ahead.

APPENDIX INDEX STRUCTURES AND WEIGHTING PATTERNS

COMPOSITION

Both the Import Price Index and the Export Price Index have been reweighted in the September quarter 2013. It is ABS practice to reweight these indexes annually each September quarter, as explained in paragraphs 8–10 of the Explanatory Notes. The new weighting patterns for both the Import Price Index and Export Price Index, based on the Standard International Trade Classification (SITC) (Revision 4), are presented in this Appendix.

All SITC sections and divisions are included in the reweighted index structure for completeness. However, indexes for some of the lower weighted SITC divisions are not constructed separately and so are not available for publication.

Corresponding new weighting patterns based on classification by Broad Economic Categories (BEC), Harmonized Tariff Item Statistical Classification (HTSIC) and Australian and New Zealand Standard Industrial Classification (ANZSIC) for the Import Price Index and Australian Harmonised Export Commodity Classification (AHECC) and ANZSIC for the Export Price Index can be made available on request.

APPENDIX INDEX STRUCTURES AND WEIGHTING PATTERNS *continued*

IMPORT PRICE INDEX GROUPED BY SITC (REVISION 4) (a)(b)

SITC Code	PERCENTAGE CONTRIBUTION	
	Divisions to All Sections 2013	Divisions and Sections to All Groups 2013
0 Food and live animals	100.0	4.31
01 Meat and meat preparations	6.64	0.29
02 Dairy products and birds' eggs	6.81	0.29
03 Fish (not marine mammals), crustaceans, molluscs and aquatic invertebrates, and preparations thereof	15.15	0.65
04 Cereals and cereal preparations	9.29	0.40
05 Vegetables and fruit	18.76	0.81
06 Sugars, sugar preparations and honey	3.48	0.15
07 Coffee, tea, cocoa, spices, and manufactures thereof	13.34	0.58
08 Feeding stuff for animals (not including unmilled cereals)	7.10	0.31
09 Miscellaneous edible products and preparations	19.43	0.83
1 Beverages and tobacco	100.0	0.93
11 Beverages	83.44	0.78
12 Tobacco and tobacco manufactures	16.56	0.15
2 Crude materials, inedible, except fuels	100.0	1.06
21 Hides, skins and furskins, raw	0.12	0.00
22 Oil-seeds and oleaginous fruits	2.50	0.03
23 Crude rubber (including synthetic and reclaimed)	4.17	0.04
24 Cork and wood	24.98	0.27
25 Pulp and waste paper	6.78	0.07
26 Textile fibres and their wastes	3.75	0.04
27 Crude fertilisers, other than those of Division 56, and crude minerals (excluding coal, petroleum and precious stones)	13.46	0.14
28 Metalliferous ores and metal scrap	27.65	0.29
29 Crude animal and vegetable materials, n.e.s.	16.59	0.18
3 Mineral fuels, lubricants and related materials	100.0	17.59
32 Coal, coke and briquettes	0.06	0.01
33 Petroleum, petroleum products and related materials	92.76	16.32
34 Gas, natural and manufactured	7.18	1.26
4 Animal and vegetable oils, fats and waxes	100.0	0.23
41 Animal oils and fats	11.67	0.03
42 Fixed vegetable fats and oils, crude, refined or fractionated	74.91	0.17
43 Animal or vegetable fats and oils, processed; waxes of animal or vegetable origin; inedible mixtures or preparations of animal or vegetable fats or oils, n.e.s.	13.42	0.03
5 Chemicals and related products, n.e.s.	100.0	10.46
51 Organic chemicals	10.76	1.13
52 Inorganic chemicals	5.53	0.58
53 Dyeing, tanning and colouring materials	2.58	0.27
54 Medicinal and pharmaceutical products	43.94	4.60
55 Essential oils and resinoids and perfume materials; toilet, polishing and cleansing preparations	8.42	0.88
56 Fertilisers (other than those of group 272)	6.22	0.65
57 Plastics in primary forms	6.83	0.71
58 Plastics in non-primary forms	6.16	0.64
59 Chemical materials and products, n.e.s.	9.56	1.00

(a) Standard International Trade Classification, Revision 4.

(b) Indexes for some lower weighted sections/divisions are not available for publication.

APPENDIX INDEX STRUCTURES AND WEIGHTING PATTERNS *continued*

IMPORT PRICE INDEX GROUPED BY SITC (REVISION 4)(a)(b) *continued*

SITC Code	PERCENTAGE CONTRIBUTION	
	Divisions to Sections 2013	Divisions and Sections to All Groups 2013
6 Manufactured goods classified chiefly by material	100.0	11.35
61 Leather, leather manufactures, n.e.s and dressed furskins	0.43	0.05
62 Rubber manufactures, n.e.s.	14.64	1.66
63 Cork and wood manufactures (excluding furniture)	3.16	0.36
64 Paper, paperboard and articles of paper pulp, of paper or of paperboard	9.95	1.13
65 Textile yarn, fabrics, made-up articles, n.e.s., and related products	9.53	1.08
66 Non-metallic mineral manufactures, n.e.s.	9.25	1.05
67 Iron and steel	15.87	1.80
68 Non-ferrous metals	9.88	1.12
69 Manufactures of metals, n.e.s.	27.29	3.10
7 Machinery and transport equipment	100.0	39.85
71 Power-generating machinery and equipment	4.96	1.98
72 Machinery specialised for particular industries	9.64	3.84
73 Metalworking machinery	0.67	0.27
74 General industrial machinery and equipment, n.e.s. and machine parts, n.e.s.	14.14	5.63
75 Office machines and automatic data-processing machines	9.67	3.85
76 Telecommunications and sound-recording equipment and reproducing apparatus and equipment	12.54	5.00
77 Electrical machinery, apparatus, appliances, n.e.s., and electrical parts thereof (including non-electrical counterparts, n.e.s., of electrical household-type equipment)	12.09	4.82
78 Road vehicles (including air-cushion vehicles)	32.87	13.10
79 Other transport equipment	3.42	1.36
8 Miscellaneous manufactured articles	100.0	12.20
81 Prefabricated buildings; sanitary, plumbing, heating and lighting fixtures and fittings, n.e.s.	4.82	0.59
82 Furniture, parts thereof; bedding, mattresses, mattress supports, cushions and similar stuffed furnishings	10.75	1.31
83 Travel goods, handbags and similar containers	3.50	0.43
84 Articles of apparel and clothing accessories	21.84	2.66
85 Footwear	5.46	0.67
87 Professional, scientific and controlling instruments and apparatus, n.e.s.	18.28	2.23
88 Photographic apparatus, equipment and supplies and optical goods, n.e.s., watches and clocks	5.03	0.61
89 Miscellaneous manufactured articles, n.e.s.	30.32	3.70
9 Commodities and transactions not classified elsewhere in the SITC	100.0	2.02
97 Gold, non-monetary (excluding gold ores and concentrates)	100.0	2.02

(a) Standard International Trade Classification, Revision 4.

(b) Indexes for some lower weighted sections/divisions are not available for publication.

APPENDIX INDEX STRUCTURES AND WEIGHTING PATTERNS *continued*

EXPORT PRICE INDEX GROUPED BY SITC (REVISION 4)(a)(b)

		PERCENTAGE CONTRIBUTIONS	
		
		Divisions & Sections to All Groups	
		2013	2013
SITC Code			
0	Food and live animals	100.0	10.66
00	Live animals other than animals of division 03	3.75	0.40
01	Meat and meat preparations	27.63	2.95
02	Dairy products and birds' eggs	8.04	0.85
03	Fish (not marine mammals) crustaceans, molluscs and aquatic invertebrates and preparations thereof	3.72	0.40
04	Cereals and cereal preparations	33.96	3.62
05	Vegetables and fruit	7.53	0.80
06	Sugars, sugar preparations and honey	6.16	0.66
07	Coffee, tea, cocoa, spices and manufactures thereof	0.93	0.10
08	Feeding stuff for animals (not including unmilled cereals)	4.54	0.48
09	Miscellaneous edible products and preparations	3.74	0.40
1	Beverages and tobacco	100.0	0.87
11	Beverages	96.25	0.84
12	Tobacco and tobacco manufactures	3.75	0.03
2	Crude materials, inedible, except fuels	100.0	37.29
21	Hides, skins and furskins, raw	0.90	0.34
22	Oil-seeds and oleaginous fruits	2.13	0.80
23	Crude rubber (including synthetic and reclaimed)	0.02	0.01
24	Cork and wood	1.00	0.37
25	Pulp and waste paper	0.26	0.10
26	Textile fibres and their wastes	5.79	2.15
27	Crude fertilisers, other than those of division 56, and crude minerals (excluding coal, petroleum and precious stones)	1.20	0.45
28	Metalliferous ores and metal scrap	88.40	32.96
29	Crude animal and vegetable materials, n.e.s.	0.30	0.11
3	Mineral fuels, lubricants and related materials	100.0	26.85
32	Coal, coke and briquettes	59.50	15.97
33	Petroleum, petroleum products and related materials	17.98	4.83
34	Gas, natural and manufactured	22.52	6.05
4	Animal and vegetable oils, fats and waxes	100.0	0.23
41	Animal oils and fats	65.30	0.14
42	Fixed vegetable fats and oils, crude, refined or fractioned	32.48	0.08
43	Animal or vegetable fats and oils, processed; waxes of animal or vegetable origin; inedible mixtures or preparations of animal or vegetable fats or oils, n.e.s.	2.22	0.01
5	Chemicals and related products, n.e.s.	100.0	3.46
51	Organic chemicals	2.62	0.09
52	Inorganic chemicals	9.40	0.32
53	Dyeing, tanning and colouring materials	7.82	0.27
54	Medicinal and pharmaceutical products	49.15	1.70
55	Essential oils and resinoids and perfume materials; toilet, polishing and cleansing preparations	7.21	0.25
56	Fertilisers (other than those of group 272)	3.93	0.14
57	Plastics in primary forms	4.60	0.16
58	Plastics in non-primary forms	3.76	0.13
59	Chemical materials and products, n.e.s.	11.51	0.40

(a) Standard International Trade Classification, Revision 4.

(b) Indexes for some lower weighted sections/divisions are not available for publication.

APPENDIX INDEX STRUCTURES AND WEIGHTING PATTERNS *continued*

EXPORT PRICE INDEX GROUPED BY SITC (REVISION 4)(a)(b) *continued*

		PERCENTAGE CONTRIBUTIONS	
		
		Divisions &	
		Division	Sections
		to	to All
		Sections	Groups
SITC Code		2013	2013
6	Manufactured goods classified chiefly by material	100.0	6.47
61	Leather, leather manufactures, n.e.s., and dressed furskins	1.23	0.08
62	Rubber manufactures, n.e.s.	1.28	0.09
63	Cork and wood manufactures (excluding furniture)	0.61	0.04
64	Paper, paperboard and articles of paper pulp, of paper or of paperboard	5.11	0.33
65	Textile yarn, fabrics, made-up articles, n.e.s., and related products	1.54	0.10
66	Non-metallic mineral manufactures, n.e.s.	5.63	0.36
67	Iron and steel	8.67	0.56
68	Non-ferrous metals	69.90	4.52
69	Manufactures of metals, n.e.s.	6.03	0.39
7	Machinery and transport equipment	100.0	5.51
71-75	Power generating, general industrial and other specialised machinery and equipment	45.92	2.53
76-77	Telecommunications equipment, sound-recording apparatus and electrical machinery, n.e.s.	19.80	1.09
78	Road vehicles (including air-cushion vehicles)	21.03	1.16
79	Other transport equipment	13.25	0.73
8	Miscellaneous manufactured articles	100.0	2.04
81-82	Prefabricated buildings, building fittings and furniture	4.58	0.09
83	Travel goods, handbags and similar containers	0.69	0.01
84	Articles of apparel and clothing accessories	4.78	0.10
85	Footwear	1.07	0.02
87	Professional, scientific and controlling instruments and apparatus, n.e.s.	37.53	0.77
88	Photographic apparatus, equipment and supplies and optical goods, n.e.s., watches and clocks	4.77	0.10
89	Miscellaneous manufactured articles, n.e.s.	46.58	0.95
9	Commodities and transactions not classified elsewhere in the SITC	100.0	6.62
93	Special transactions and commodities not classified according to kind	6.08	0.40
96	Coin (other than gold coin), not being legal tender	4.92	0.33
97	Gold, non-monetary (excluding gold ores and concentrates)	89.00	5.89

(a) Standard International Trade Classification, Revision 4.

(b) Indexes for some lower weighted sections/divisions are not available for publication.

FOR MORE INFORMATION . . .

INTERNET **www.abs.gov.au** the ABS website is the best place for data from our publications and information about the ABS.

INFORMATION AND REFERRAL SERVICE

Our consultants can help you access the full range of information published by the ABS that is available free of charge from our website. Information tailored to your needs can also be requested as a 'user pays' service. Specialists are on hand to help you with analytical or methodological advice.

PHONE 1300 135 070

EMAIL client.services@abs.gov.au

FAX 1300 135 211

POST Client Services, ABS, GPO Box 796, Sydney NSW 2001

FREE ACCESS TO STATISTICS

All statistics on the ABS website can be downloaded free of charge.

WEB ADDRESS www.abs.gov.au